



NEWSLETTER

Friday 13th Sept 2024

A MESSAGE FROM OUR EXECUTIVE PRINCIPAL

THE CHILDREN HAVE NOW SETTLED INTO THEIR NEW CLASSES AND LESSONS ARE IN FULL SWING. THE OUTCOMES BEING PRODUCED ARE ALREADY BLOWING US AWAY ALONG WITH THE CHILDREN'S RESILIENCE TO NEW CHALLENGES. WHAT A GREAT START TO THE YEAR!

WATCH THIS SPACE FOR THE INTRODUCTION OF OUR NEW FAMILY AND COMMUNITY WORKER TO JOIN THE PASTORAL TEAM HERE AT VICTORIA...

Mrs Jenkins

A MESSAGE FROM OUR VICE PRINCIPAL

GOOD FRIDAY AFTERNOON,

I HOPE YOU ALL HAVE HAD AN EXCITING WEEK AS WE HAVE IN SCHOOL. THE CHILDREN HAVE NOW STARTED THEIR NEW PE SLOTS WITH OUR OUTSIDE PROVIDERS AND HAVE THOROUGHLY LOVED THEM. IT WAS SO AMAZING TO SEE OUR SMALLEST CHILDREN ENGAGING IN BALLET AND KS1 ENGAGING IN STREET DANCE.

LOTS OF OTHER EXCITING THINGS HAVE BEEN HAPPENING AND YOU WILL SEE ALL THE MAGIC ON FACEBOOK SO IF YOU HAVE NOT GIVEN CONSENT GO TO ARBOR SO YOU CAN JOIN IN AND SEE ALL THE EXCITING THINGS HAPPENING IN YOUR CHILD'S CLASSROOM.

HAVE A LOVELY WEEKEND.

 [LIKE AND FOLLOW US ON FACEBOOK](#)

Mrs Kingdon

School Meals

Please can we remind all parents that school meals need to be **paid for in advance**. Log in to your Arbor app to **top up your account**. School meals are £2.60 per day and needs to be paid on you child's Arbor meal account. Please contact the school office if you experience any issues with your Arbor App



ATTENDANCE

Our target is 97%

Nursery AM	94.6%
Nursery PM	91.4%
RNC	95.7%
RCW	85%
1JR	100%
1/2MH	98.3%
2IB	95.2%
3CM	91.1%
3/4OK	93.9%
4CPM	94.8%
5EM	98.6%
5CH	97.7%
6LP	90.3%
6RM	92.4%
Number of lates this week	50

SCHOOL ATTENDANCE


THIS WEEK IS **94.6%**

Well-done to **1JR** and **5EM** who will be spending next week with Biscuit Bear!



GET INTO TEACHING

WITH JOSIE THIRKELL INSTITUTE

 01226 720758

 traintoteach@jtioe.org.uk

 www.jtioe.org.uk

PE TIMETABLE

PE kits need to include a white t-shirt, black shorts and trainers. For colder weather a sports jumper and joggers.

Please bring your child's PE kit on a Monday morning and leave it in school for the week to be returned on Friday.

Don't forget to label your child's clothes.



MONDAY	5EM, 5CH, 3MC
TUESDAY	
WEDNESDAY	3CM, 3/4OK, 4CPM 5EM, 5CH, 6LP, 6RM
THURSDAY	NURSERY, RCW, RNC 1JR, 1/2MH, 2IB, 3/4OK, 4CPM
FRIDAY	

FREE SCHOOL MEALS



The free school meals criteria has now changed. In the following weeks, we ask for you all to please fill in a free school meal application.

This can be done either online or you can pop into our school office where we're happy to help!

If your child is already awarded Free School Meals you do not need to apply again.



ASDA Rewards Pounds, not points

INTRODUCING CASHPOT FOR SCHOOLS!

you scan, we donate ££s TO SCHOOLS.



Asda Rewards Cashpot for Schools

Cashpot for Schools Terms & Conditions Asda Rewards terms & Conditions

1

Download and sign up to the Asda Rewards app

Opt into the Cashpot for Schools campaign and select a specific primary school or select 'Schools in Need'.

2

Shop in store across Asda and George, or online at Asda.com

Asda will donate a percentage of your shop to your chosen school each time you shop and scan.

3

Asda does the rest

The money raised will be donated through Parentkind to schools to spend on what they need most. This won't affect your own Cashpot earn.

Once opted in and selected a school, we will add £1 to your chosen schools Cashpot to help get them started.

Each school will get an additional £50 added to their Cashpot, after at least one customer has shopped and scanned their Rewards app.



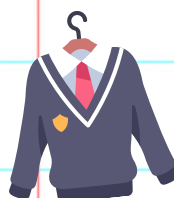
Uniform

POLITE REMINDER, ALL CHILDREN SHOULD BE COMING TO SCHOOL IN THE CORRECT UNIFORM, THIS INCLUDES PE DAYS.

**CORRECT UNIFORM:
RED OR WHITE POLO
RED JUMPER/CARDIGAN
BLACK OR GREY TROUSERS/SHORTS/SKIRT
AND SUITABLE BLACK FOOTWEAR (SHOES NOT BRIGHT COLOURED TRAINERS).**

CROCS, TRAINERS, SLIDERS (AND ANYTHING SIMILAR) ARE NOT SUITABLE FOR SCHOOL.

WHILE BRANDED UNIFORM IS PREFERRED IT IS NOT ESSENTIAL.



OH Snap

This Week's Snapshots



**NUT FREE
ZONE**



A polite reminder that our school is a **NUT-FREE ZONE**. This means there should be no type of nuts on school premises. If your child brings a packed lunch or snack, please make sure they don't contain nuts i.e. peanut butter, Chocolate spread, No Sesame etc.

COFFEE & CRAFT COURSES

Don't miss these amazing brand new **FREE** short courses
Registration will begin at 8.45am in the school house
Wednesday 25th September 2024.

The course will start the following week at 8.45am-10.45am
More information to follow

