



22nd March 2024

### Message from Mr Green

This week the teachers and leaders have been busy in their phases, analysing the assessment data and putting together the next steps for the summer term. I will be meeting with them next week to celebrate the progress that is a result of everyone's hard work, and to also talk through the aspirations for our children next term! We have the parent consultations after the Easter break and I can't wait for the teaching staff to share updates on your child/ children with you all!

On Monday, our year 6 children jumped on a bus to Wrexham with Mr Greenfield-Myczko, Miss Bailey, Mrs Jordan, and Mr McCulloch. I'd like to give them all a huge shoutout for giving up their time to ensure that our children had an amazing experience over the three days. A year 6 residential has many lasting benefits and the experience that these young people have had away from home should not be underestimated! Over the three days they will have developed their independence, confidence, self-esteem, social skills and made life-long memories. I've managed to have many conversations since their return and I'm over the moon that they all had an amazing adventure!

Have a great weekend and I will see you all on Monday for the last 4 days of term!

### Attendance



This week:	95.4%
So far this year:	93.2%
EYFS/KS1 winner:	98.8%
KS2 winner:	99%

Well done to and who will be spending next week with **Biscuit Bear!**

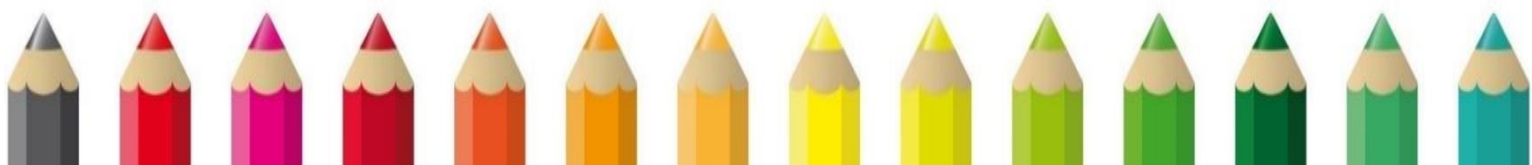
### Reminders

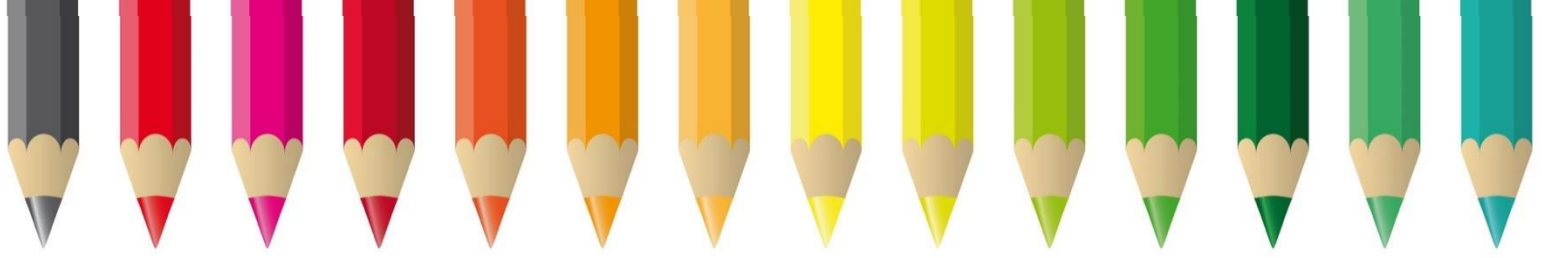
No clubs next week until after Easter

Bring in your Decorated Egg from Monday to enter our competition. Prizes for the winners will be presented on Thursday in assembly.

Sign up for the new Parent and child crafting class starting after Easter with Julie Parker LCC. Ask at reception for details or speak to Ms Wathen or Ms Dooley.

Easter Service @St Phillips Church 1.30-2.30pm Wednesday 27<sup>th</sup> March. All welcome!





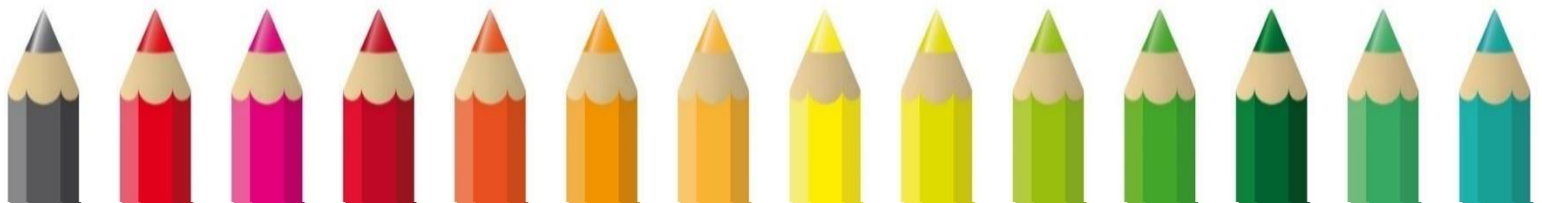
## Robin Wood residential @ Wrexham you were AMAZING!!



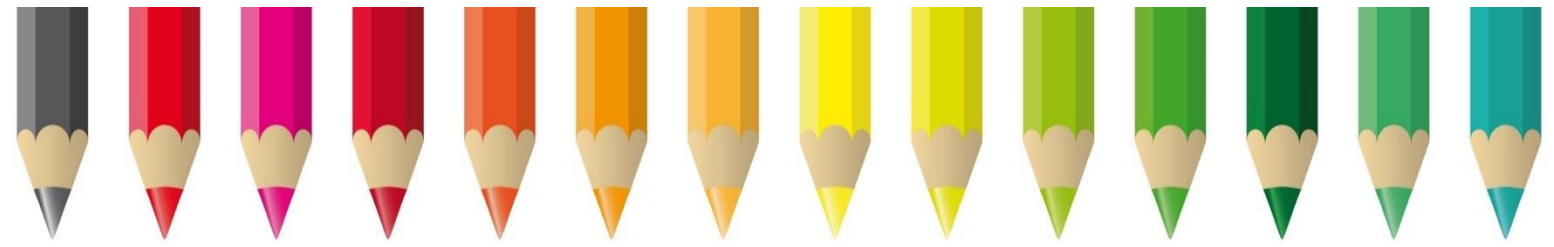
And just like that, it's over! What a start to the week Year 6 have had. The much hyped and anticipated Wrexham residential certainly didn't disappoint with the children challenging themselves physically and mentally to become better versions of themselves. From climbing to canoeing; zip-wiring to crate stacking, each activity left a huge grin on the faces of the children, myself, and all of the staff that were at the residential, are immensely proud of the children; they were incredible role models, respectful to one another and simply the best they can be!



## Maths City Rewards Trip

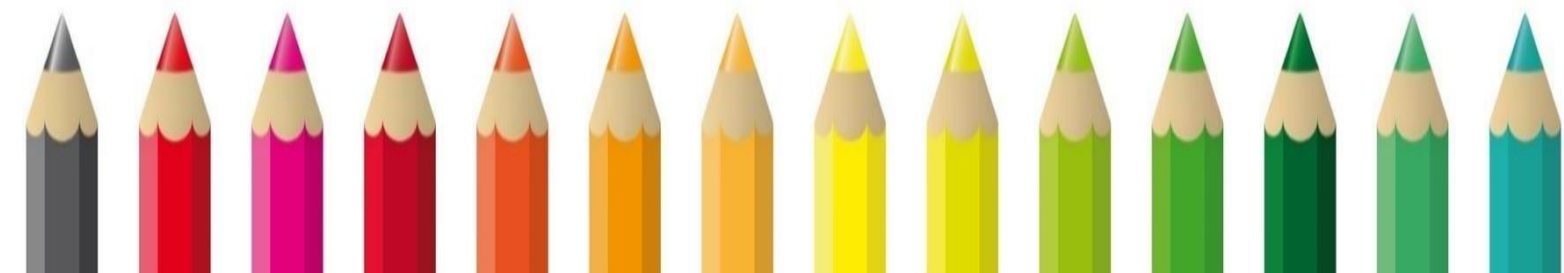
Children had the opportunity to explore and engage in an interactive space created to explore all the wonders of mathematics! The group of 14 children explored over 30 exhibits including tackling real life maths problems as well as problem solving! Keep working hard on all your math skills and see if you can be in the next group to experience this fun Amazing day out!







Spring 2 	Events 
<b>School Opens Monday 19<sup>th</sup> February</b>	
Tuesday 20 <sup>th</sup> February	School Nurse in for Reception and Year 6 (screening)
Thursday 21 <sup>st</sup> February	Magic Breakfast Event 7.30am – 8.30am
Wednesday 28 <sup>th</sup> February	Extreme Readers Event
Friday 1 <sup>st</sup> March	Parent coffee Morning all welcome Single Parent Power
Monday 4 <sup>th</sup> March	New Nursery Stay and Play
Thursday 7 <sup>th</sup> March	World Book Day Non-Uniform Day
Friday 8 <sup>th</sup> March	Mother's Day Coffee Morning
Monday 11 <sup>th</sup> March	Year 5 cycling
Monday 11 <sup>th</sup> March	Key stage 1 trip to Magna
Friday 15 <sup>th</sup> March	Comic Relief Day is a non-uniform day in school.
Monday 18 <sup>th</sup> March	Year 6 Residential to Robin Wood Wrexham!!!
Thursday 21 <sup>st</sup> March	Math City Trip
Thursday 21 <sup>st</sup> March	Easter Disco
Thursday 21 <sup>st</sup> and Friday 22 <sup>nd</sup> March	Year 5 RE Day
Friday 22 <sup>nd</sup> March	Spring After School Clubs End
Monday 25 <sup>th</sup> March	Easter Egg Competition Entries to be brought into school
Wednesday 27 <sup>th</sup> March	Easter Celebrations @StPhillips Church 1.30pm-2.30pm
Thursday 28 <sup>th</sup> March	Easter Egg Winners
Thursday 28 <sup>th</sup> March	School closes for Easter Holidays
Monday 15 <sup>th</sup> April	School Reopens for Summer 1



Summer Term 1

# PARENT SUPPORT 2024 EVENTS

**SUPPORTING OUR COMMUNITY**

**19th April**

## Meet the SENDCO

FIND OUT ABOUT WHAT ROLE OUR SENDCO, MR COOK, PLAYS IN SCHOOL.

**26th April**

## Online Safety

FIND OUT HOW TO KEEP CHILDREN SAFE ONLINE WITH MR MCHALE.

**3rd May**

## SEND Focus - AUTISM

FIND OUT ABOUT SUPPORT FOR CHILDREN WITH ASC/ASD IN SCHOOL.

**10th May**

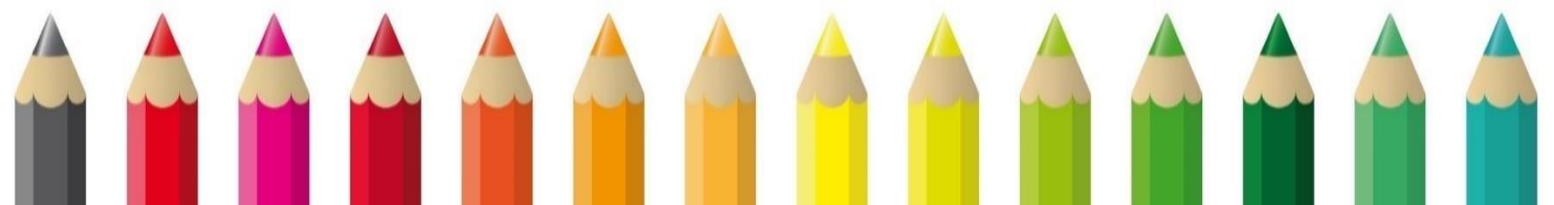
## Pupil Voice

FIND OUT HOW CHILDREN CONTRIBUTE TO WHAT GOES ON IN SCHOOL.

All events will take place on a Friday morning from 8:30am - 9:30am during our coffee morning time in the staffroom.



Made with PosterMyWall.com





**FREE  
FUN**  
CREATIVE  
SESSIONS

**FREE  
HEALTHY**  
BREAKFASTS  
& LUNCHES

# Healthy Holidays for Easter

**FOR 5-16  
YEAR OLDS**

**AT  
NOWELL  
MOUNT  
COMMUNITY  
CENTRE**

**2<sup>ND</sup>-5<sup>TH</sup>  
APRIL**  
9.30 AM-3 PM

Leeds  
Community  
Foundation

**BHR**

*Burmantofts  
Harehills  
Richmond Hill*

PRIMARY CARE  
NETWORK

**east  
leeds  
project**