



8th March 2024

## Message from Mr Green

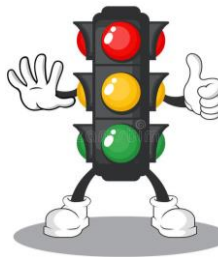
Happy Friday!

This week has been a busy one and feels like it has flown by! Our World Book Day celebrations on Thursday were out of this world! The children had a great time dressed as their favourite characters, and their work on our chosen book, *The Midnight Panther* by Poonam Mistry, was amazing! This morning we had our special Mother's Day edition of the coffee morning. There were some great discussions with Miss Dooley around everyone's plans for the weekend, as well as celebrating being amazing Mums on this day of all days - International Women's Day! I have also enjoyed getting into classes to see English in action this week. Observing lessons from nursery to Year 6, it is clear that our children their **LOVE** their reading and writing! **#TeamVPA**

Next week our KS1 children jump on a coach for their eagerly anticipated trip to the magnificent Magna! Our next group of Wellbeing Warriors will be celebrating with Miss Paterson, our year 5 children will begin their cycling training with our friends from Cycle North, and we have a full day of Comic Relief next Friday to look forward to - it's safe to say it's going to be another brilliantly busy one!

Have a fantastic weekend and I'll see you all on Monday.

## Attendance



This week: **94.5%**

So far this year: **92.7%**

EYFS/KS1 winner: **97.2%**

KS2 winner: **97.7%**

Well done to **2MH** and **5SW** who will be spending next week with **Biscuit Bear!**

## Reminders PE - Kit

Black, Navy, or white T-Shirt; Black or Navy shorts or joggers. Long hair to be tied back with a bobble. Earrings – stud earrings only to be worn for health and safety reasons.

### Monday to Thursday

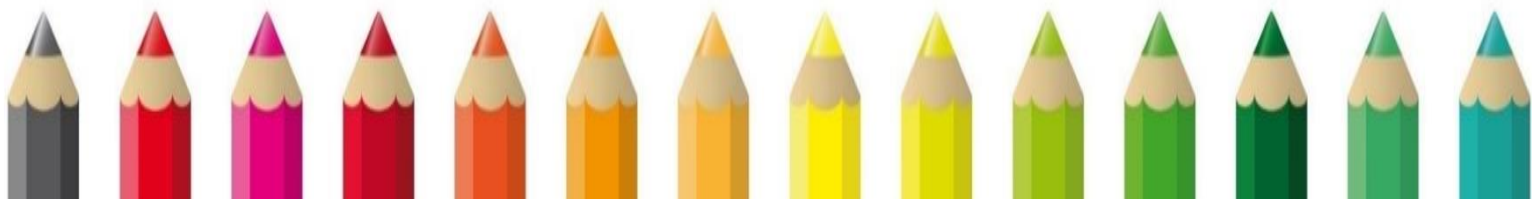
Community Pantry, Uniform / Clothing Exchange  
**3.15pm - 3.45pm**

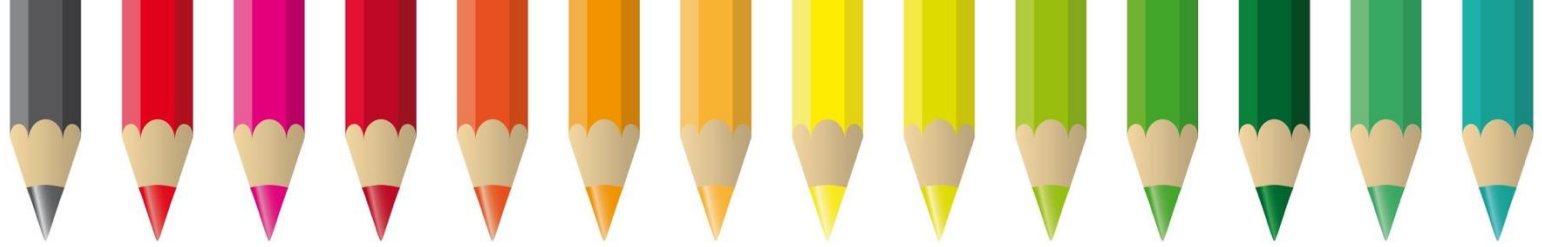
### Thursday

Parent coffee and crafting sessions with Julie Parker Leeds Learning Hub  
**1.15pm - 3.15pm**

### Friday

Coffee mornings with Miss Dooley in the staffroom - all welcome! Please call in and join us!  
**8.30am - 9.30am**

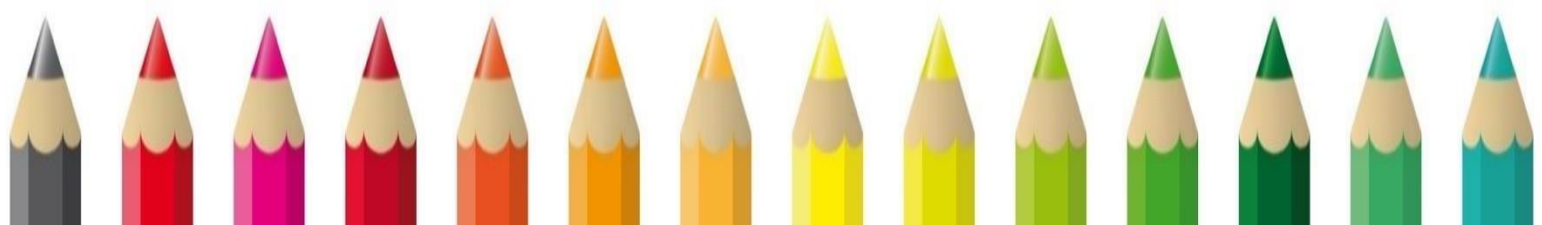


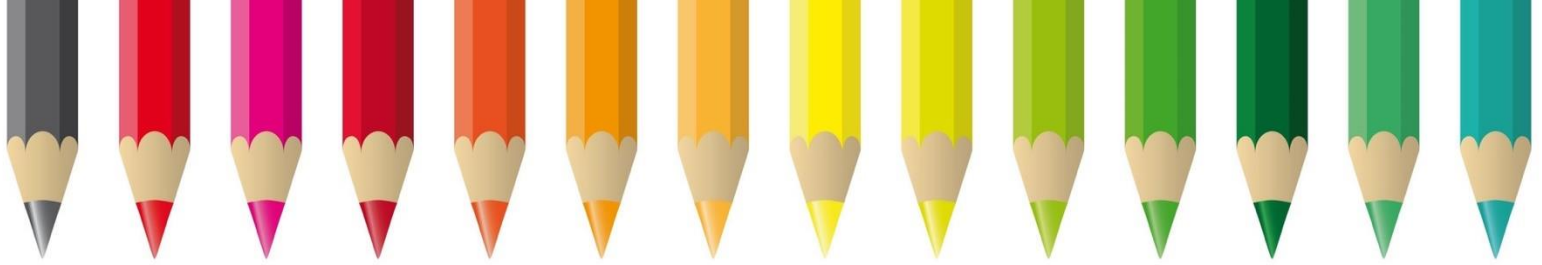


## Love Reading!

On Thursday, the school celebrated World Book Day! This year's theme was 'Read Your Way'.

The children all looked fantastic as they came dressed as something that could be described in one word; there were some very creative and imaginative costume ideas. Throughout the afternoon, the children focussed on our key text 'The Midnight Panther' a story all about courage and individuality. All children then completed a range of writing, PSHE and art activities and produced some beautiful outcomes which I have no doubt will be proudly displayed in classrooms.

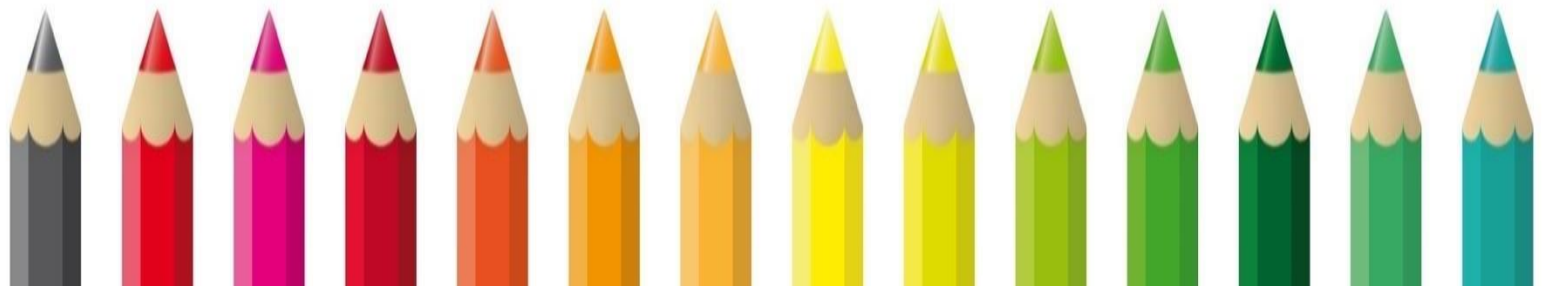


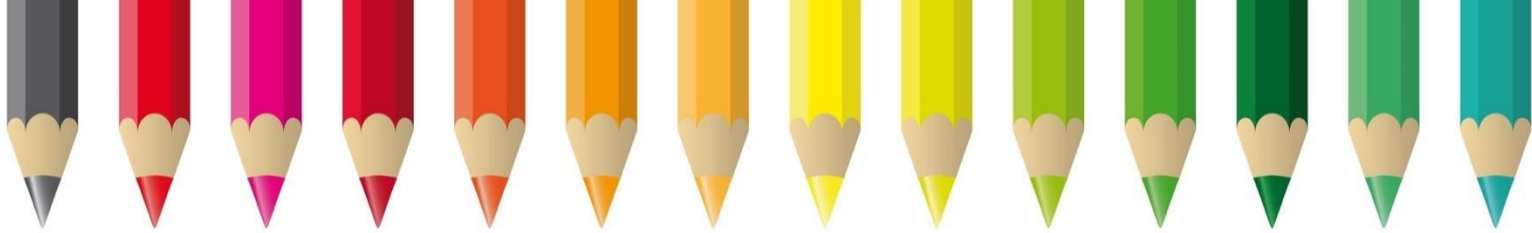




**COMIC  
RELIEF**

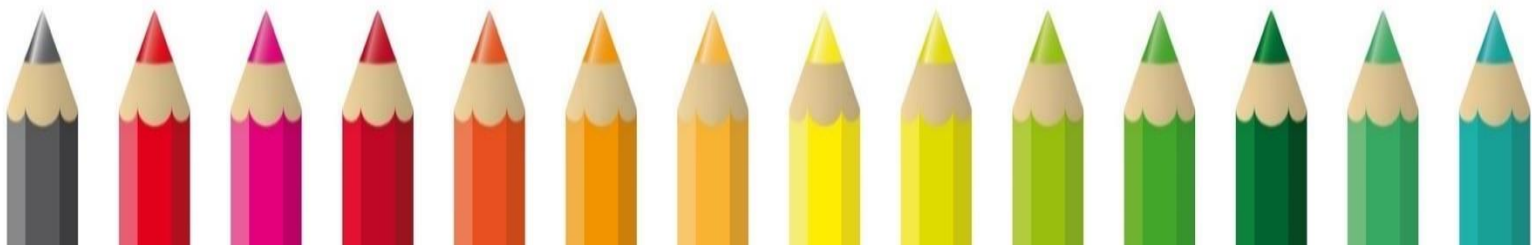
**RED  
NOSE  
DAY**

**FRIDAY 15 MARCH**





<b>Spring 2</b> 	<b>Events</b> 
<b>School Opens Monday 19<sup>th</sup> February</b>	
<b>Tuesday 20<sup>th</sup> February</b>	<b>School Nurse in for Reception and Year 6 (screening)</b>
<b>Thursday 21<sup>st</sup> February</b>	<b>Magic Breakfast Event 7.30am – 8.30am</b>
<b>Wednesday 28<sup>th</sup> February</b>	<b>Extreme Readers Event</b>
<b>Friday 1<sup>st</sup> March</b>	<b>Parent coffee Morning all welcome Single Parent Power</b>
<b>Monday 4<sup>th</sup> March</b>	<b>New Nursery Stay and Play</b>
<b>Thursday 7<sup>th</sup> March</b>	<b>World Book Day Non-Uniform Day</b>
<b>Friday 8<sup>th</sup> March</b>	<b>Mother's Day Coffee Morning</b>
<b>Monday 11<sup>th</sup> March</b>	<b>Year 5 cycling</b>
<b>Monday 11<sup>th</sup> March</b>	<b>Key stage 1 trip to Magna</b>
<b>Friday 15<sup>th</sup> March</b>	<b>Comic Relief Day is a non-uniform day in school. Every child in school will receive a cake. Red Nose Day is a fundraising campaign run by the non-profit organization Comic Relief Inc. Red Nose Day brings people together to raise money to assist in ending child poverty around the world. All donations received will be sent to the charity in support of this event.</b>
<b>Monday 18<sup>th</sup> March</b>	<b>Year 6 Residential to Robin Wood Wrexham!!!</b>
<b>Thurs 21<sup>st</sup> March</b>	<b>Math City Trip</b>
<b>Thurs 21<sup>st</sup> March</b>	<b>Easter Disco more information to follow</b>
<b>Thursday 21<sup>st</sup> and Friday 22<sup>nd</sup> March</b>	<b>Year 5 RE Day</b>
<b>Friday 22<sup>nd</sup> March</b>	<b>Spring After School Clubs End</b>
<b>Monday 25<sup>th</sup> March</b>	<b>Easter Egg Competition Entries to be brought into school</b>
<b>Thurs 28<sup>th</sup> March</b>	<b>Easter Egg Winners</b>
<b>Thurs 28<sup>th</sup> March</b>	<b>School closes for Easter Holidays</b>
<b>Monday 15<sup>th</sup> April</b>	<b>School Reopens for Summer 1</b>



# EAST END PARK NEW BIKE TRACK LAUNCH



**EAST END PARK BIKE TRACK  
SATURDAY 16TH MARCH  
1PM - 3PM**

**BIKE AND ROLLER SKATING SKILLS WITH OUR  
EXPERT COACHES**

**FAMILY-FRIENDLY FUN NAVIGATION CHALLENGE &  
INFORMATION ON WALKING AND WHEELING  
ACTIVITIES IN YOUR AREA**



**VISIT DR BIKE FOR A BIKE HEALTH CHECK AND MINOR REPAIRS.  
CHECKS WILL BE ON A FIRST COME FIRST SERVED BASIS AND  
CHILDREN MUST BE ACCOMPANIED BY AN ADULT**

**REFRESHMENTS, KIT DONATION, BIKE SAFETY  
COMMUNITY CONVERSATIONS AND PRIZES!**



For more information contact us at  
[activetravelsocialprescribing@leeds.gov.uk](mailto:activetravelsocialprescribing@leeds.gov.uk)

[walkitrideit.com](http://walkitrideit.com)

**WALK IT. RIDE IT.**